

# Ceiling Cassette - 4way Compact FDTC



**New!**



FDTC15-56

Honeycomb type



Draft Prevention Panel (option)



Grid type

\*R32 indoor unit are not compatible with R410A outdoor unit and vice versa.

## Remote control (option)

Wired



RC-EX3D



RC-E5



RCH-E3



RC-ES1

Wireless



RCN-TC-5AW-E3

## R32 Leak detector and shut-off valve available as an option

Refrigerant leak detector  
RLD-KIT-E



Shut-off valve  
SV-KIT-S1N-E  
SV-KIT-L1N-E



## Panel select pattern

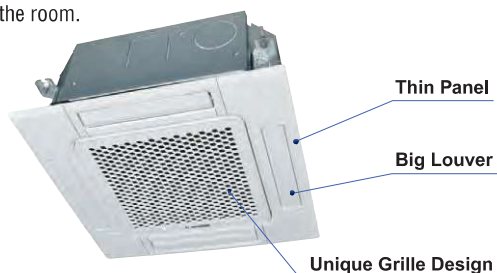
(option)

		Motion sensor	Wireless receiver	Motion sensor & Wireless receiver	
		LB-TC-5W-E	RCN-TC-5AW-E3	LB-TC-5W-E	RCN-TC-5AW-E3
	Standard Panel	TC-PSA-5AW-E			
	Draft Prevention Panel	TC-PSAE-5AW-E			
	Standard Panel	TC-PSAG-5AW-E			
	Draft Prevention Panel	TC-PSAGE-5AW-E			

## European design & Flat panel

### Unique Grille Design

A grille designed with a unique structure and a clean white panel that blends with the room.



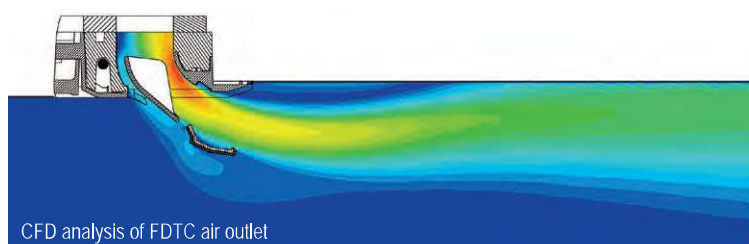
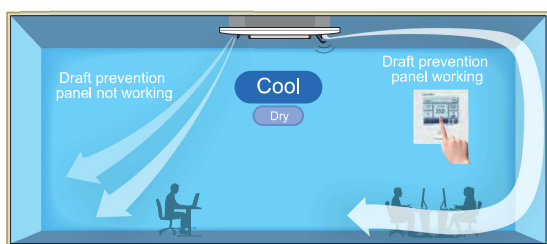
### Integrated ceiling system design 600x600

Easy installation - with a weight of only 14kg, a thin panel, and a main body size of only 248mm.



## Draft Prevention Panel

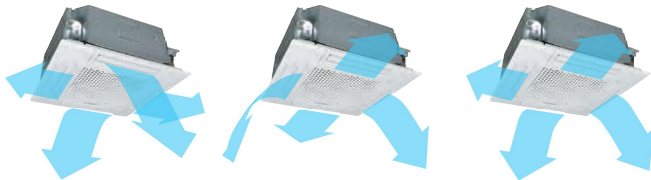
This prevents cold/hot draft being blown directly on the user. It is possible to set Draft Prevention Panel for each air outlet.



User can position panels by using the remote controller (RC-EX3D, Wireless kit) only when Draft Prevention Panel is available.

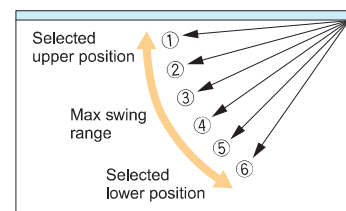
### Individual flap control system

According to room temperature conditions, four directions of air flow can be controlled individually by following Flap control system. Individual flap control is available even after installation.



The flap can swing within the range of upper and lower flap position selected with wired remote control.

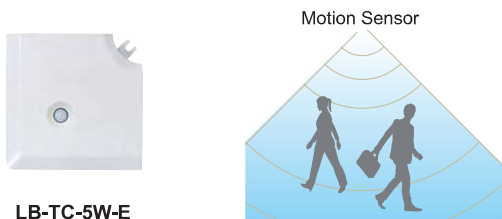
\*The wireless remote control is not applicable to the Individual flap control system.



### Motion Sensor

(option)

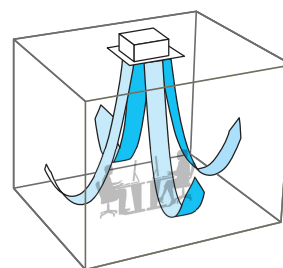
Motion sensor is equipped in the corner of the panel and detects the presence/absence and activity of humans in a room to improve the comfort and energy saving performance of the unit.



LB-TC-5W-E

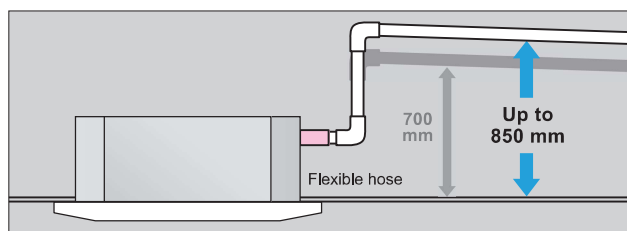
### Suitable for High ceilings

The Powerful blowout carries comfortable air flow to the floor even in high ceiling applications. It is ideal for high ceiling offices, stores, etc., with a wide, uniform air flow throughout the room.



### 850mm Drain Pump

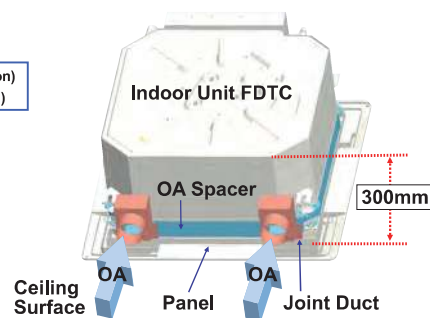
Drain can be discharged upward by 850 mm from the ceiling surface close to the indoor unit. It allows a piping layout with a high degree of freedom depending on the installation location.



### Taking OA (Outside Air) into inside

Fresh air can be taken in without optional parts. When the fresh air is insufficient, optional parts can be used.

OA Spacer TC-OAS-E2(option)  
Joint Duct TC-OAD-E(option)



## SPECIFICATIONS

Indoor unit	FDTC		15KXZE3-W	22KXZE3-W	28KXZE3-W	36KXZE3-W	45KXZE3-W	56KXZE3-W
Power source			1 Phase 220-240V, 50Hz					
Nominal capacity	Cooling	kW	1.5	2.2	2.8	3.6	4.5	5.6
	Heating		1.7	2.5	3.2	4.0	5.0	6.3
Power consumption	Cooling	W	30-30			40-40	50-50	60-60
	Heating							
Sound power level <sup>†</sup>	Cooling	dB(A)	47	49		54	58	60
	Heating		46			53	57	
Sound pressure level <sup>†</sup> (P-Hi/Hi/Me/Lo)	Cooling	dB(A)	33/30/28/25	35/32/29/25		39/36/31/26	43/39/36/28	47/43/39/31
	Heating		33/30/26/22					
Exterior dimensions (HeightxWidthxDepth)	Unit	mm	248x570x570					
	Panel		10x620x620					
Net weight	Unit	kg	12.5	13		14		
	Panel		Standard panel : 2.5, Draft prevention panel : 3					
Air flow (P-Hi/Hi/Me/Lo)	Cooling	m³/ min	8/7/6/5	9/8/7/6		10/9/8/6	12/10/9/7	14/12/10/8
	Heating							
Outside air intake			Possible					
Refrigerant piping size (Flare)	Liquid	mm (in)	ø6.35(1/4")					
	Gas		ø9.52(3/8")			ø12.7(1/2")		
Panel (option)			Honeycomb : TC-PSA-5AW-E, TC-PSAE-5AW-E Grid : TC-PSAG-5AW-E, TC-PSAGE-5AW-E					
Air filter, Q'ty			Pocket plastic net x 1(Washable)					

Indoor unit	FDTC		15KXZE1	22KXZE1	28KXZE1	36KXZE1	45KXZE1	56KXZE1
Power source			1 Phase 220-240V, 50Hz					
Nominal capacity	Cooling	kW	1.5	2.2	2.8	3.6	4.5	5.6
	Heating		1.7	2.5	3.2	4.0	5.0	6.3
Power consumption	Cooling	W	30-30			40-40	50-50	60-60
	Heating							
Sound power level <sup>1</sup>	Cooling	dB(A)	47	49		54	58	60
	Heating		46			53	57	
Sound pressure level <sup>1</sup> (P-Hi/Hi/Me/Lo)	Cooling	dB(A)	33/30/28/25	35/32/29/25		39/36/31/26	43/39/36/28	47/43/39/31
	Heating		33/30/26/22					
Exterior dimensions (HeightxWidthxDepth)	Unit	mm	248x570x570					
	Panel		10x620x620					
Net weight	Unit	kg	12.5	13		14		
	Panel		Standard panel : 2.5, Draft prevention panel : 3					
Air flow (P-Hi/Hi/Me/Lo)	Cooling	m³/ min	8/7/6/5	9/8/7/6		10/9/8/6	12/10/9/7	14/12/10/8
	Heating							
Outside air intake			Possible					
Refrigerant piping size (Flare)	Liquid	mm (in)	ø6.35(1/4")					
	Gas		ø9.52(3/8")			ø12.7(1/2")		
Panel (option)			Honeycomb : TC-PSA-5AW-E, TC-PSAE-5AW-E Grid : TC-PSAG-5AW-E, TC-PSAGE-5AW-E					
Air filter, Q'ty			Pocket plastic net x 1(Washable)					

1. The data are measured under the following conditions(ISO-T1). Cooling: Indoor temp. of 27°CDB, 19°CWB, and outdoor temp. of 35°CDB. Heating: Indoor temp. of 20°CDB, and outdoor temp. of 7°CDB, 6°CWB.  
2. Sound pressure level indicates the value in an anechoic chamber. During operation these values are somewhat higher due to ambient conditions.

