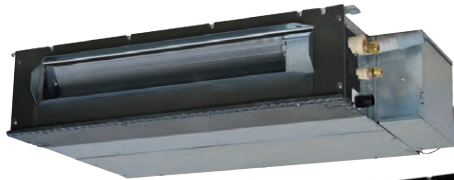




SINGLE-SPLIT CEILING CONCEALED TYPE

SRR-ZS



SRR25,35ZS-W

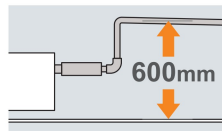


SRR50,60ZS-W

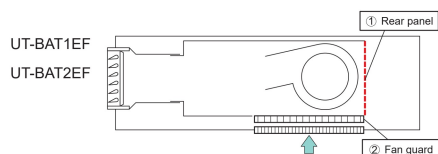
New!

Enhanced Installation Workability

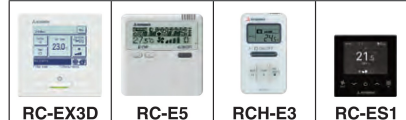
600mm Drain Pump is mounted in all models. The indoor unit is completely hidden in the ceiling, so this is suitable for spaces with classy interior decoration.



Bottom air inlet kit (optional)



Wired remote control (optional)



Wireless remote control



SRC25,35ZS-W2



SRC50,60ZS-W3

KEY FEATURES

- The SRR series' indoor unit is discreetly concealed under the ceiling, making it ideal for living rooms or bedroom areas
- Compact design, standing at a height of only 200mm
- Utilizes refrigerant R32 for low Global Warming Potential (GWP) and high energy efficiency
- Operates quietly for enhanced comfort
- Features low static pressure levels for efficient airflow management

SPECIFICATIONS

Indoor unit			SRR25ZS-W	SRR35ZS-W	SRR50ZS-W	SRR60ZS-W
Outdoor unit			SRC25ZS-W2	SRC35ZS-W2	SRC50ZS-W3	SRC60ZS-W3
Power source			1 Phase, 220 - 240V, 50Hz			
Nominal cooling capacity (Min-Max)		kW	2.5 (0.9 - 3.2)	3.5 (0.9 - 4.1)	5.0 (1.2 - 6.0)	5.6 (1.2 - 6.5)
Nominal heating capacity (Min-Max)		kW	2.9 (0.9 - 4.4)	4.2 (1.0 - 5.2)	5.4 (1.0 - 8.2)	6.7 (1.0 - 8.6)
Power consumption	Cooling/Heating	kW	0.62 / 0.65	0.93 / 1.01	1.42 / 1.39	1.70 / 1.89
	EER/COP		4.03 / 4.46	3.76 / 4.16	3.52 / 3.88	3.29 / 3.54
Max. running current		A	9	9	15	15
Sound power level	Indoor	Cooling/Heating	56 / 59	57 / 60	59 / 61	60 / 63
	Outdoor	Cooling/Heating	58 / 58	62 / 62	63 / 62	65 / 65
Sound pressure level	Indoor	Cooling (Hi/Me/Lo/Ulo)	37 / 33 / 30 / 24	38 / 34 / 31 / 25	41 / 37 / 34 / 29	44 / 38 / 35 / 30
		Heating (Hi/Me/Lo/Ulo)	40 / 37 / 34 / 28	42 / 38 / 35 / 29	43 / 39 / 37 / 32	45 / 41 / 38 / 33
	Outdoor	Cooling/Heating	47 / 47	50 / 50	51 / 49	52 / 53
Air flow	Indoor	Cooling (Hi/Me/Lo/Ulo)	9.5 / 8.0 / 6.5 / 4.5	10.0 / 8.5 / 7.0 / 5.0	13.5 / 11.0 / 10.0 / 7.5	14.5 / 11.5 / 10.5 / 8.0
		Heating (Hi/Me/Lo/Ulo)	10.0 / 9.0 / 8.0 / 6.0	10.5 / 9.5 / 8.5 / 6.5	14.0 / 12.5 / 11.0 / 8.5	15.0 / 13.0 / 11.5 / 9.0
	Outdoor	Cooling/Heating	27.4 / 23.6	31.5 / 27.8	39.0 / 33.0	41.5 / 39.0
External static pressure		Pa	Standard : 5 ¹ (Initial static pressure with air filter : 5Pa)			
Exterior dimensions	Indoor	Height x Width x Depth	200 x 750 x 500		200 x 950 x 500	
	Outdoor		540 x 780(+62) x 290		640 x 800(+71) x 290	
Net weight		kg	20.5 / 31.0	20.5 / 34.5	24.0 / 45.0	24.0 / 45.0
Refrigerant		Type/GWP	R32 / 675			
		Charge	0.62 / 0.419	0.78 / 0.527	1.30 / 0.878	1.30 / 0.878
Refrigerant piping size		Liquid/Gas	6.35(1/4") / 9.52(3/8")		6.35(1/4") / 12.7(1/2")	
Refrigerant line (one way) length [chargeless length]		m	Max.20 [15]		Max.30 [15]	
Vertical height differences		Outdoor is higher/lower	Max.10 / Max.10		Max.20 / Max.20	
Outdoor operating temperature range	Cooling	°CDB	-15 to 46		-15 to 46	
	Heating		-15 to 24		-20 to 24	
Bottom air inlet kit (option)			UT-BAT1EF		UT-BAT2EF	

* The data are measured under the following conditions(ISO-T1, H1). Cooling: Indoor temp. of 27°CDB, 19°CWB, and outdoor temp. of 35°CDB. Heating: Indoor temp. of 20°CDB, and outdoor temp. of 7°CDB, 6°CWB.

* Sound level indicates the value in an anechoic chamber. During operation these values are somewhat higher due to ambient conditions.

* 'tonne(s) of CO₂ equivalent' means a quantity of greenhouse gases- expressed as the product of the weight of the greenhouse gases in metric tonnes and of their global warming potential.

*¹ The maximum external static pressure can be used up to 35Pa(25•35ZS), 50Pa(50•60ZS), but the airflow will be reduced.