

Duct Connected (Compact & Flexible) FDUH

Model No.

FDUH22KXE6F
FDUH28KXE6F
FDUH36KXE6F



Filter kit (option)

UH-FL1E



*Filter pressure loss:5pa

Drain up kit (option)

(600mm)

UH-DU-E



Remote control (option)

Wired



RC-EX3D RC-E5 RCH-E3

Wireless

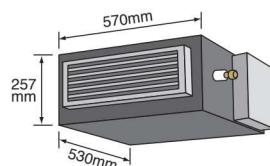


RCN-KIT4-E2

Compact and thin size, light weight

Our leading high technology has created the best solution for air conditioning in hotels. The compact and thin sized units don't compromise on high energy efficiency all while weighing in at only 20kg.

The lowest sound level in the industry can ensure comfortable stay and rest in hotels.



Motion Sensor

(Option)

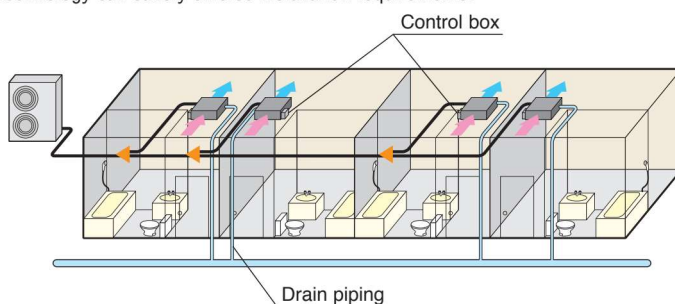
Motion sensor is equipped in the ceiling plane or wall plane and detects the presence/absence and activity of humans in a room to improve the comfort and energy saving performance of the unit.



LB-KIT2

Installation Flexibility

Control box and drain piping can be installed on both side of the unit and air intake to the unit is available from bottom or back side. Our highest technology can satisfy diverse installation requirements.



Wired remote control



RCH-E3
(option)

Simple remote control

Designed specially for hotel rooms, control buttons are limited only to the minimum required functions such as ON/OFF, mode, temperature setting and fan speed. It is really simple and easy to use.

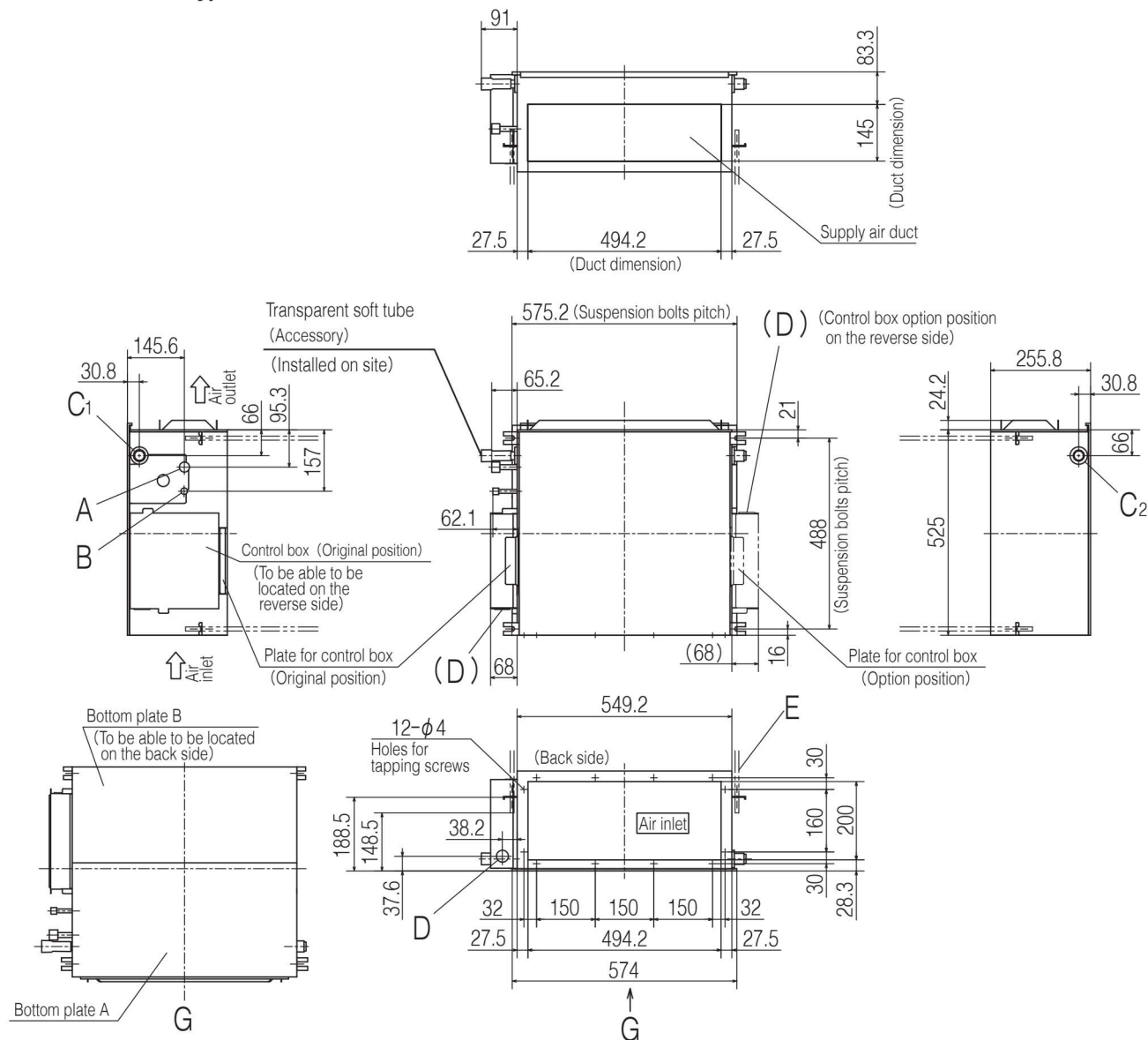
Specifications

Item	Model	FDUH22KXE6F	FDUH28KXE6F	FDUH36KXE6F
Nominal cooling capacity	kW	2.2	2.8	3.6
Nominal heating capacity	kW	2.5	3.2	4.0
Power source		1 Phase 220-240V, 50Hz		
Power consumption	Cooling	0.05-0.07		
	Heating	0.05-0.07		
Sound power level	dB(A)	60		
Sound pressure level	dB(A)	P-Hi:39 Hi: 33 Me: 30 Lo: 27		
Exterior dimensions	HxWxD	mm 257x570x530		
Net weight	kg	20		
Air flow	m ³ /min	P-Hi:8.5 Hi: 7 Me: 6.5 Lo: 6		
External static pressure	Pa	30		
Outside air intake		Not possible		
Air filter		Filter kit:UH-FL1E(option)		
Remote control(option)		wired:RC-EX3D, RC-E5, RCH-E3 wireless:RCN-KIT4-E2		
Installation data		Liquid line:ø6.35(1/4")		
Refrigerant piping size	mm(in)	Gas line:ø9.52(3/8")		
		Liquid line:ø6.35(1/4")		
		Gas line:ø12.7(1/2")		

1. The data are measured under the following conditions(ISO-T1). Cooling: Indoor temp. of 27°CDB, 19°CWB, and outdoor temp. of 35°CDB. Heating: Indoor temp. of 20°CDB, and outdoor temp. of 7°CDB, 6°CWB.

2. Sound pressure level indicates the value in an anechoic chamber. During operation these values are somewhat higher due to ambient conditions.

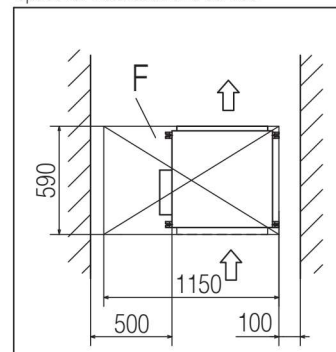
All measurements in mm.



Symbol	Content		
	Model	22,28	36
A	Gas piping	φ 9.52 (3/8") (Flare)	φ 12.7 (1/2") (Flare)
B	Liquid piping	φ 6.35 (1/4") (Flare)	
C ₁	Drain piping	VP20 (I.D.20,O.D.26) Note (2)	
C ₂	Drain piping	To be used instead of "C."	
D	Hole for wiring	φ 30	
E	Suspension bolts	(M10)	
F	Inspection hole	(590 × 1150) Note (3)	

Notes

- (1) The model name label is attached on the fan case inside the air return grille.
- (2) Prepare the connecting socket (VP20) on site.
(As for drain piping, it is possible to choose C₁ or C₂.)
- (3) When control box is located on the reverse side, Installation space should be modified new location.



Dimensions

All measurements in mm.

Bottom suction type

Symbol	Content		
	Model	22,28	36
A	Gas piping	φ 9.52 (3/8") (Flare)	φ 12.7 (1/2") (Flare)
B	Liquid piping	φ 6.35 (1/4") (Flare)	
C ₁	Drain piping	VP20 (I.D.20,O.D.26) Note (2)	
C ₂	Drain piping	To be used instead of "C."	
D	Hole for wiring	φ 30	
E	Suspension bolts	(M10)	
F	Inspection hole	(555 x 1150) Note (3)	

Notes

- (1) The model name label is attached on the fan cose inside the air return grille.
- (2) Prepare the connecting socket (VP20) on site.
(As for drain piping, it is possible to choose C₁ or C₂)
- (3) When control box is located on the reverse side, Installation space should be modified new location.

Space for installation and service

